



somfy®

TECHNICAL DATA SHEET

20 - 01 - 2010

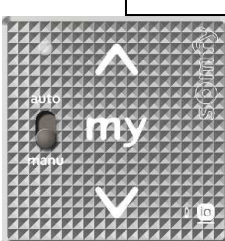
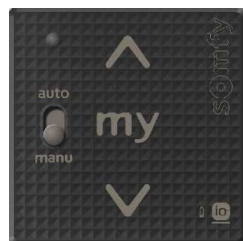
SDEV-FICA 83R2

Designation	Smooove 1 A/M io
Reference	1811013 (pure shine); 1811015 (black shine); 1811014 (sliver shine)
Range	Io Homecontrol

FUNCTIONS

- 1W control
- Sensitive Command :Up, My, Down
- Setting with io ergonomic
- Composition: 1 module, 1 Mounting plate

- Icon Battery life time
- Switch ON/OFF
- Switch selected mode (Advanced ergonomic for application)
- Switch AUTO/MANU

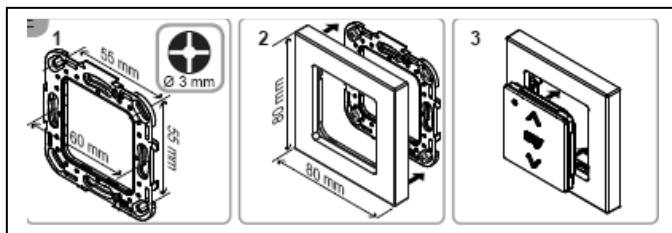


Support mural

TECHNICAL SPECIFICATIONS

Box	Material Color	ABS & PC Pure Shine, Black Shine, Silver Shine
	Size	Module 50 x 50 x 10 mm
	Protection factor against solid & splashproof	IP 30
Battery	Voltage Type Number	3V CR 2430 x1
Battery lifetime (at ambient temperature in typical conditions)		42 months
Radio frequency EIRP (Equivalent Isotropically Radiated Power) Modulation Type		868.95MHz -5 dBm or 0.3mW FSK dev. \pm 19.2 kHz
Protocol Antenna		io homecontrol 1 Way Integrated
Temperature range	Storing Working	-30°C / +70°C 0°C / +60°C
Drop test		Installation: at 0°C 1/face (height : 1,2m) Using: at 20°C 1/face (height : 1,2m)
Wear resistivity Cleaning products resistivity		50 250 cycles
Weight Standard (CE)		24g
Safety of the user : EN EN60950-1 : 2006		
Health of the user : EN50371 : 2002		
Electromagnetic compatibility : EN61000-6-1: 2007_EN61000-6-3 : 2007_EN301 489-3 V1.4.1 : 2002_EN301 489-1 V1.8.1 : 2008		
Radio Spectrum : EN300220-2 V2.1.2 : 2007_EN300220-1 V2.1.1 : 2006		

DESCRIPTION

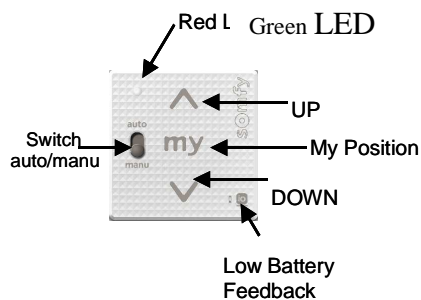


Green cover for io technology

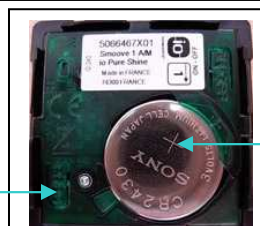
Select mode button



ON / OFF



Prog



Battery

COMPATIBILITIES

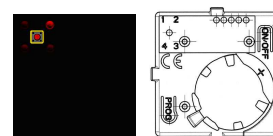
Actuators :

- All io homecontrol actuators (0% / 100%)
- US Dimming for light & heat profiles
- DAP all io for VB fast speed, RS with tilting profiles
- US Dimming for VB slow speed

INSTALLATION

Select mode

Sens of the mode choice (toggle) is done clockwise.



LED LIGHTS remains continuously ON during 3s

LED colour still to be confirmed

Position 1: 0 – 100% (VR, windows, GO...)

Main Parameter = Position of the shutter

Position 2 : Dimming US (1st param) (light, heat...)

Main parameter = Light intensity

Functional parameter # 1 = Light intensity gradient

Position 4: Dimming US (All io 1st and 2nd param) (VB slow speed)

Main parameter = Position of the shutter or Position of the blind
Functional parameter # 2 = Speed of the slats during orientation
Functional parameter # 3 = Orientation of the slats

Position 3: DAP all io (VB fast speed, VRLO..)

Main parameter = Position of the shutter or Position of the blind
Functional parameter # 3 = Orientation of the slats

Switch ON/OFF



ON / OFF

- Press On/Off button for wake up the sensitive pad.

Remark

The prog button is available when the module is OFF

Switch Auto/Manu



**On selecting the MANU
(Local lock) position**

**-> Mode change for
Auto-Manu**

**I want to lock
my product.
This product
will not any
more receive
the orders
coming from an
other control
point.**

**On selecting the AUTO
position**

**-> Mode change for
Auto-Manu**

**I want to unlock
my product.
This product
will receive the
orders coming
from an other
control point.**

Frame available



Pure



Black



Silver



Silver Mat



Light bamboo



Carbonated bamboo



Cherry



Walnut



Double Pure

BE – R&D
F. GIGOUT

QUALITY
G. BRUNEAU

MARKETING
C. DENIAU